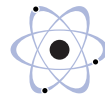
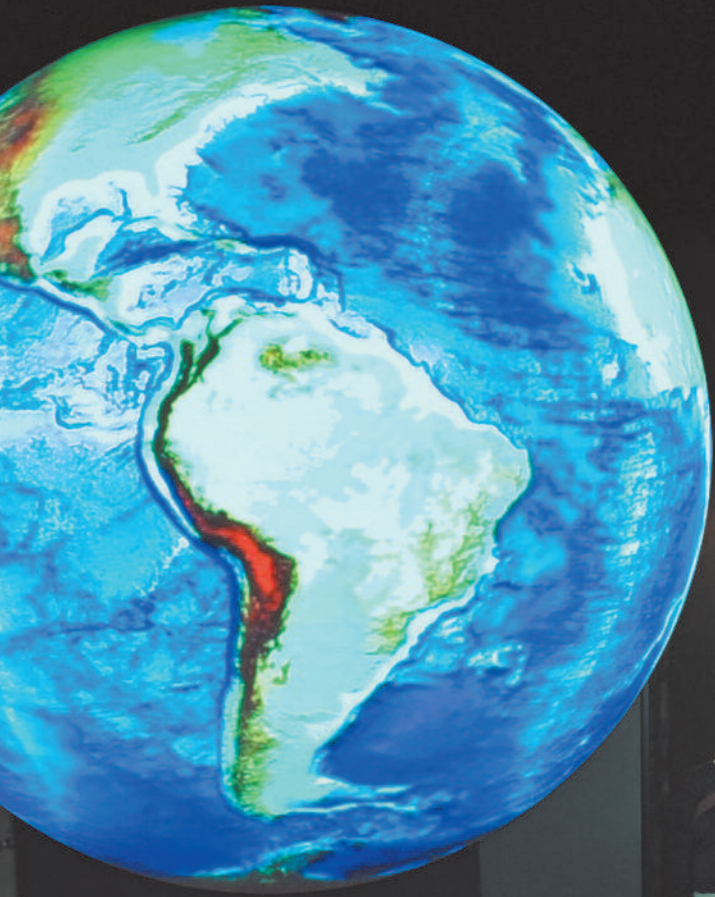


SOUTH FLORIDA SCIENCE MUSEUM



Educator Guide

2012-
2013



Educator Resources

Pictured on the front cover is the award winning exhibit developed by NOAA, entitled Science on a Sphere which has been generously funded by the Quantum Foundation.

The South Florida Science Museum is pleased to announce this exhibit will be arriving this winter as part of our expansion project. Students and adults alike will benefit from Science on a Sphere's capabilities to illustrate REAL-TIME Earth and Life Sciences. The innovative technology utilized in the Science on a Sphere will not only educate students, but inspire them so that they might consider scientific career paths.

In addition to this exhibit we are building a sparkling new 3,000 sq. ft. aquarium, an interactive Everglades exhibit, and an exhibition area for winning South Florida science fair student projects to be displayed.

TEACHER MEMBERSHIP!

Sign up for a **Teacher Membership** for A+ savings on your group visit.

We appreciate the dedication of educators in Palm Beach County! The Museum offers a special Teacher Membership package that includes all the standard benefits for an individual plus savings such as \$25 OFF the first program booked as well as 20% OFF on additional programs booked for 12 months.

The membership allows unlimited admissions to exhibits and most planetarium shows as well as a discount in the Museum store. Since the South Florida Science Museum is an ASTC member, you'll also enjoy free or reduced admission to other member organizations. By becoming a member, you'll be placed on our mailing list to receive invitations to events at the Museum.

EDUCATOR RESOURCES

The South Florida Science Museum now has a Virtual Classroom where teachers can easily log on and see all the curriculum for each class we offer. Simply go to www.s fsm.org and under the Education Tab click on Virtual classroom. Sign into the teacher guest book and view exactly which Next Generation Sunshine State Standard each program covers.

PROFESSIONAL DEVELOPMENT WORKSHOPS

Multiple workshops are held during each school year. Topics include but are not limited to various dissections, chemistry labs and life science topics. For all workshops, pre-registration is a must. Please register at least one week in advance. Note: a \$20.00 fee is charged upon registering but is refunded on the day of the workshop to attendees. Please check the website www.s fsm.org under the Education Tab for specific information.

EiE KITS

Each complete EiE kit includes detailed lesson plans with duplication masters, storybooks, and materials. This program is easily integrated with the social studies, reading, and science already being taught in the classroom. Some units offer math extensions as well.

- **PLANTS:** Packaging Engineering, designing a plant package
- **PARACHUTES:** Aerospace Engineering

PLEASE EMAIL EDUCATION@SFSM.ORG OR CALL 561-370-7706 FOR MORE INFORMATION.

EARLY LEARNING CLASSES

Children are introduced to chemistry, biology, physics, and geology through play-based, hands-on activities that stimulate thought and teach cause and effect. Young children learn through play, and each class provides an experience for your child that is both educational and memorable!

WHO? Children, ages 18 months to 4 years... and their mommy, daddy, grandparent, or caregiver.

WHAT? Sessions are infused with age appropriate activities that challenge and entertain your child while sparking a love of learning about the world around him or her. Each class includes story-time, a thematic science activity, free play structured by the week's themes, arts and crafts, and music and movement.

WHEN? Once a week, for 75 minutes, for 7 consecutive weeks. Program cost is \$80 for members, \$95 for non members.



Welcome to the South Florida Science Museum



The South Florida Science Museum is excited to present our new Educator Guide for the 2012-2013 school year. In it you will see an exciting glimpse into the new educational offerings that the museum has to offer, both at the museum and at your school. We are pleased to offer you new bioscience programs developed in partnership with the scientists at The Scripps Research Institute and The Max Planck Florida Institute. We are sure you will have as much fun taking the classes as we did developing them! As always, we welcome your feedback; please contact us anytime at education@sfsm.org or by calling (561) 370-7706.



Sincerely,

The South Florida Science Museum Education team

BUILDING THE RIGHT FOUNDATION AT THE RIGHT TIME

Expansion of the Museum is essential and is already on its way as we broke ground on April 5th, 2012.

The total scope of the project will take on 3 phases. Phase one is construction of a new, 6,000 sq. ft. building addition. The new building will house an expanded, 3,000 sq. ft. aquarium and a 3,000 sq. ft. Florida-themed permanent exhibit hall complete with an Everglades exhibit and virtual airboat ride!

Phase two is a 2,600 sq. ft. renovation and will include visitor amenities and bathrooms, a new Museum store, and a Subway sandwich shop.

Phase three is a 4,500 sq. ft. renovation to create a new traveling exhibit hall which will hold the biggest exhibits out there! Stay tuned...



Our Mission:

To excite curiosity and further the understanding and appreciation of science and technology.



Dekelboum

Contents

Planetarium Shows.....	4
Traveling Exhibits.....	7
Permanent Exhibits.....	8
Grades K-3.....	10
Grades 4-8.....	11
Grades 9-12.....	14
Online Science Curriculum.....	15
Museum Map.....	16
Planning Your Visit/Fees.....	18
Reservation Form.....	19

The Marvin Dekelboum Planetarium enjoys a proud legacy of being the first and only public planetarium in Palm Beach County. Since 1964, we have served to educate and entertain people about the wonders of the Universe. We offer daily public shows along with our selection of programs that meet K-12 educational standards.

At the Museum - Planetarium Programs

BUGS! - A RAINFOREST ADVENTURE (Grades 2-5)

Get a view of the fascinating universe of insects magnified up to 250,000 times their normal size in A Rainforest Adventure - Bugs! Become immersed in a miniature world, where a leaf weighs as much as a car and a single raindrop can quench the largest thirst. Highlighting the extraordinary world of insects, A Rainforest Adventure - Bugs! focuses on the life cycles of a praying mantis and a butterfly from their birth to their inevitable encounter in the tropical rainforest of Southeast Asia, where predator meets prey.

Big Idea 14, 15, 16, 17 SC.2.L.16.1, SC.2.L.17.2, SC.5.L.14.2, SC.5.L.17.1



STARS AND CONSTELLATIONS (Grades 2-5)

What are stars made of? Is there such a thing as a cold star? Where is the Big Bear, or the hunter Orion in the sky? In this 360° traditional planetarium experience and fun stories and myths behind the famous constellations narrated live by our science educator, students will feel like they are outside at night looking at stars.

Big Idea 5, SC.3.E.5.1, SC.3.E.5.2, SC.3.E.5.3, SC.3.E.5.5, SC.4.E.5.1, SC.4.E.5.3, SC.4.E.5.4



TO OTHER WORLDS (Grades 2-8)

Join us on a fantastic adventure through space conducted by our science educator in the planetarium. Learn the cool characteristics about planets and other objects in our Solar System and see what NASA has planned for the future of space exploration. Students will observe how stars will look that particular night with our 360° traditional planetarium experience.

Big Idea 5, SC.3.E.5.1, SC.3.E.5.2, SC.3.E.5.3, SC.3.E.5.5, SC.4.E.5.1, SC.4.E.5.3, SC.4.E.5.4, SC.5.E.5.1, SC.5.E.5.2, SC.5.E.5.3, SC.8.E.5.1, SC.8.E.5.7



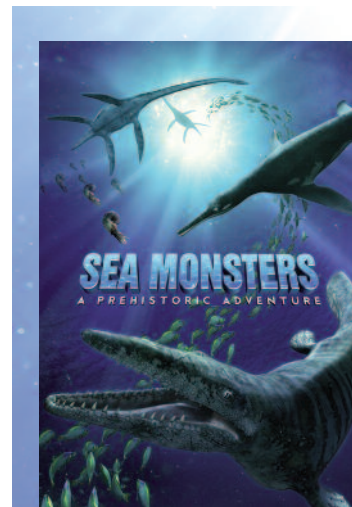
Celebrate your birthday
with our super-science team!



Give your child the perfect party!

Exciting themes include *Diggin' Dinosaurs, Under the Sea, Kabam! Chemistry, Awesome Asteroids and Science Princess Lab*. We have a package to fit every budget, from our full service party plan including: food, cake, invitations, goodie bags and more; to basic room rental. You can also book one of our award winning educational science adventures for your party.

Contact us now!
(561) 370-7708
www.sfsm.org



NEW! Sea Monsters: A Prehistoric Adventure (Grades 3-12)

Transport back to the prehistoric Late Cretaceous, when a great inland sea divided North America in two. The film, created by National Geographic, follows a curious and adventurous Dolichorhynchops, as she travels through the most dangerous oceans in history, encountering giant turtles, fierce sharks, and the most dangerous sea monster of all, the Mosasaur. This full dome adventure weaves together a series of paleontological digs from around the globe in a compelling story about scientists working as detectives to answer questions about this ancient and mysterious ocean world.

Big Idea 1, 15, SC.3.L.15.1, SC.3.L.17.1, SC.4.E.6.4, SC.4.L.17.4, SC.5.L.15.1, SC.5.L.17.1, SC.7.L.15.1, SC.7.L.15.2, SC.912.L.15.3, SC.912.L.15.1



Planetarium Shows



NEW! Cosmic Collisions (Grades 3-12)

Produced by the American Museum of Natural History (AMNH) and narrated by Robert Redford, this show illustrates that cosmic collisions are a universal force of nature, both destructive and creative. Dynamic and dazzling, they have created many things we take for granted—the glowing Moon, the sun’s warmth and light, our changing seasons and waves washing up on a sandy shore. They’ve ended the age of the

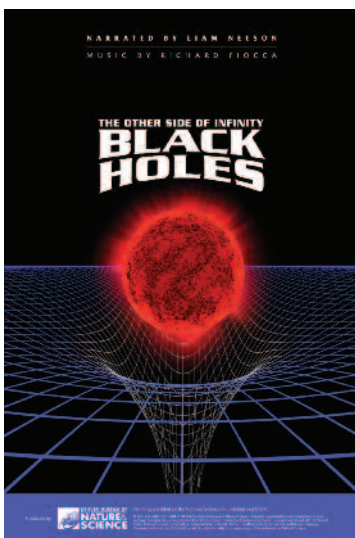
dinosaurs and changed the very map of the cosmos, reforming galaxies and giving birth to new stars and new worlds. Cosmic Collisions provides an unprecedented and extraordinary view of these catastrophic and constructive events that have shaped our world and universe.

Big Idea 2, 5, SC.3.E.5.1, SC.5.E.5.1, SC.5.E.5.3, SC.8.E.5.1, SC.8.E.5.2, SC.8.E.5.10, SC.912.E.5.1, SC.912.E.5.2

ONE WORLD, ONE SKY: BIG BIRD’S ADVENTURE (Grades PreK-1)

Follow Sesame Street’s Big Bird and Elmo as they explore the night sky with Hu Hu Zhu, a Muppet from Zhima Jie, the Chinese co-production of Sesame Street. Together, they take an imaginary trip from Sesame Street to the moon, where they discover how different it is from Earth. Children attending the show can interact as they watch, drawing constellations and counting the time it takes the sun to set.

Big Ideas: 5, 6, 12, SC.K.E.5.1, SC.K.E.5.2, SC.K.E.5.3, SC.K.E.5.4, SC.K.E.5.5, SC.K.E.5.6, MA.K.G.2.2, SC.1.E.5.1, SC.1.E.6.1, SC.1.P.12.1



BLACK HOLES: THE OTHER SIDE OF INFINITY (Grades 6-12)

The show provides a groundbreaking, scientifically accurate perspective on black holes and presents the latest compelling evidence that black holes are real. On the search for black holes across deep space, viewers encounter a range of spectacular cosmic wonders visualized by the National Center for Supercomputing Applications, including a depiction of the beginning of the universe, the Big Bang, endless seas of dust and gas drawn together by gravity to form the first stars, the collision of two galaxies that cross paths in the vastness of space, and a virtual trip into the center of the Milky Way galaxy.

Big Idea 2, 5, SC.6.P.13.1, SC.6.P.13.2, SC.7.P.10.1, SC.7.P.10.2, SC.7.P.10.3,

SC.8.E.5.1, SC.8.E.5.4, SC.8.E.5.7, SC.8.E.5.10, SC.912.E.5.1, SC.912.E.5.2, SC.912.E.5.3, SC.912.E.5.5, SC.912.E.5.6, SC.912.E.5.7, SC.912.E.5.9, SC.912.E.5.11

Astronomy Outreach - The STARLAB Programs

The STARLAB programs for grades K-5 introduce students to important scientific concepts through a portable planetarium experience that allows students to crawl into an inflatable dome. Two exciting programs are available in the STARLAB planetarium: *Stars and Constellations* and *To Other Worlds*. Available as outreach only.



StarLab - Outreach ONLY

TO OTHER WORLDS (Grades K-5)

Join us on a fantastic adventure through space conducted by our science educator in the STARLAB. Learn the cool characteristics about planets and other objects in our Solar System and see what NASA has planned for the future of space exploration. Students will observe how stars will look that particular night with our 360° star projector.

Big Idea 5, SC.K.E.5.2, SC.K.E.5.3, SC.K.E.5.5, SC.K.E.5.6, SC.1.E.5.1, SC.1.E.5.4, SC.3.E.5.1, SC.3.E.5.2, SC.3.E.5.3, SC.3.E.5.5, SC.4.E.5.1, SC.4.E.5.3, SC.4.E.5.4, SC.5.E.5.1, SC.5.E.5.2, SC.5.E.5.3

STARS AND CONSTELLATIONS (Grades K-5)

What are stars made of? Is there such a thing as a cold star? Where is the Big Bear, or the hunter Orion in the sky? With two 360° projection slides and fun stories and myths behind the famous constellations narrated live by our science educator in the STARLAB, students will feel like they are outside at night looking at stars. *Big Idea 5, SC.K.E.5.2, SC.K.E.5.3, SC.K.E.5.5, SC.K.E.5.6, SC.1.E.5.1, SC.3.E.5.1, SC.3.E.5.2, SC.3.E.5.3, SC.3.E.5.5, SC.4.E.5.1, SC.4.E.5.3, SC.4.E.5.4*

***The STARLAB program requires air-conditioned space 22 feet in diameter and 13 feet in height with access to an electrical outlet. Holds up to 30 students and chaperones. Requires a minimum of 2 programs per day.**

Dekelboun Planetarium Shows



Laser Concerts

Visitors can enjoy their favorite rock classics set to an amazing 3D laser concert! Performances take place on the second Saturday night of each month at 6:30, 7:30 and 8:30 p.m. All laser concerts are \$8 for members and \$10 for non-members, and include a pair of ChromaDepth 3D laser glasses. Our newest laser concert is the blockbuster Laser Michael Jackson in which visitors can dance and sing to their favorite song recorded by the King of Pop. Tickets can be purchased at the door or online <http://www.s fsm.org/planetarium>.

ASTRONAUT (Grades 3-8)

What does it take to become an astronaut? What's it like on the International Space Station? How does space travel affect the human body? This digital full-dome planetarium show will take you into space while exploring the effects that space travel has on our bodies and the technology needed to protect us.

Big Idea 5, 14, SC.3.E.5.4, SC.3.E.6.1, SC.4.E.5.4, SC.4.E.5.5, SC.4.E.6.5, SC.5.E.5.1, SC.5.E.5.3, SC.5.L.14.2, SC.5.L.17.1, SC.6.E.7.9, SC.6.L.14.5, SC.6.P.13.1, SC.6.P.13.2, SC.7.P.10.1, SC.8.E.5.1, SC.8.E.5.3, SC.8.E.5.4, SC.8.E.5.7, SC.8.E.5.10, SC.8.E.5.12

KALUOKA 'HINA - THE ENCHANTED REEF (Grades K-5)

A digital full-dome planetarium show, this animated feature film transports the viewer to a tropical reef, a one-of-a-kind world: colorful and foreign, full of adventure and danger, riddles and mysteries, old legends and myths... a world inhabited by creatures that are humorous and courageous, lovable and bizarre, charming and dangerous.

Big Idea 14, SC.K.E.5.1, SC.K.L.14.2, SC.K.L.14.3, SC.1.E.5.2, SC.1.E.6.1, SC.1.L.14.3, SC.1.L.17.1, SC.2.L.17.1, SC.2.L.17.2, SC.3.L.15.1, SC.4.E.5.4, SC.4.L.16.2, SC.4.L.17.4, SC.5.L.15.1, SC.5.L.17.1

TWO SMALL PIECES OF GLASS (Grades 3-12)

Filmed in commemoration of the International Year of Astronomy, *Two Small Pieces of Glass* is an amazing digital full-dome planetarium show that follows two young people at a star party. The history of telescopes, how telescopes work, and beautiful images of the discoveries made by these instruments over the last 400 years make this show an educational and exciting space experience!

Big Idea 2, SC.3.E.5.1, SC.3.E.5.5, SC.3.N.3.2, SC.3.P.10.3, SC.3.P.10.4, SC.4.E.5.1, SC.4.E.6.5, SC.4.N.1.7, SC.5.E.5.1, SC.6.N.2.3, SC.7.N.3.2, SC.7.P.10.2, SC.8.E.5.10, SC.912.E.5.5

INTERNATIONAL SPACE STATION CONTACT AT THE SOUTH FLORIDA SCIENCE MUSEUM

Our Museum has been selected by NASA as one of only a handful of organizations to make contact with the International Space Station. Through our very own Amateur Radio Station (WS4SFM), we'll collaborate with a selection of local students to serve as mission control when we connect with astronauts during their flyover the week of October 22, 2012.

ARISS is a cooperative effort among the National Aeronautics and Space Administration (NASA), the American Radio Relay League (ARRL), the Radio Amateur Satellite Corporation (AMSAT), and other international space agencies to provide a very unique experience encompassing the "real world" application of science, technology, engineering and math (STEM) through radio contact. ARISS stands for Amateur Radio on the International Space Station. Stay tuned as we prepare to embark on this great journey of space exploration and learn more about amateur radio and space technologies. **For more information, please contact Kate Arrizza at karrizza@s fsm.org or (561) 370-7706.**

New Permanent Exhibit



Science on a Sphere

Arriving February 2nd, 2013

The South Florida Science Museum is pleased to announce this award-winning exhibit, developed by NOAA and generously funded by the Quantum Foundation, as part of our 2013 expansion project. Animated images of atmospheric storms, climate change, and ocean temperature can be shown on the sphere, as well as hurricanes, earthquakes and tsunamis happening on the globe at this very minute!

Big Ideas 1, 2, 3, 4, 5, 6, 7, 14, 15, 16 and 17



Permanent Exhibits

BRAIN TEASERS

Exercise your mind with puzzling challenges for all ages!

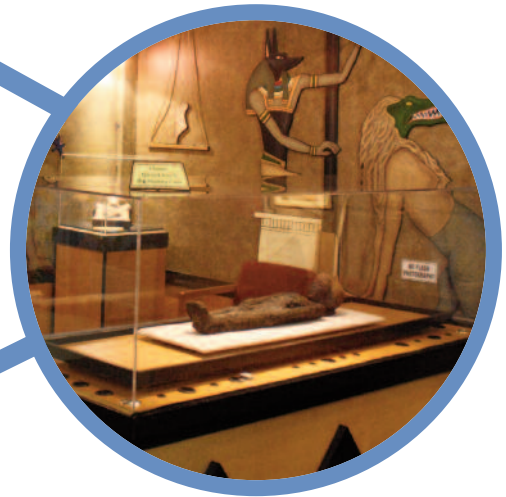


DEKELBOUM PLANETARIUM

The planetarium is a 61-seat theater including advanced full-dome digital projection equipment, laser machine and a Spitz star projector. Palm Beach County's only public planetarium features a rich history and modern technology to transport visitors beyond the skies.

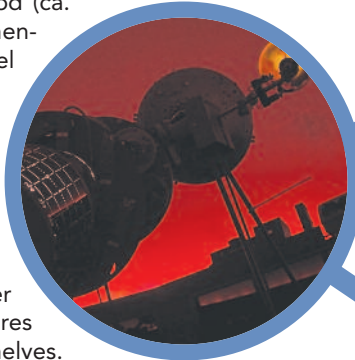
EGYPT GALLERY

Discover the lives of Ancient Egyptians through funerary artifacts from the late Ptolemaic to the Roman Period (ca. 625 BCE to 600 AD). Our gallery features an authentic Egyptian child mummy on loan from the Michael C. Carlos Museum at Emory University, in addition to authentic artifacts including a mummified falcon, canopic jar, Ushabti figures, and more.



MCGINTY AQUARIUMS

Visit Palm Beach County's only oceanic aquariums! Sea life from around the world is represented through thousands of gallons of salt-water aquariums. Specialty tanks feature unique creatures found in our local estuaries and deep ocean shelves. Learn about genetically modified fish, artificial reef growth and conservation in hundreds of gallons of fresh water specialty tanks.



OUT OF THIS WORLD

See rare space artifacts and real rocks from space in our collection. Touch a 232 pound meteorite or spend a few minutes watching Apollo 14 Highlights while you view a real moon rock brought back on an Apollo mission. This collection also features a Mars rock found in Nigeria in 1962.



WS4FSM HAM RADIO CENTER

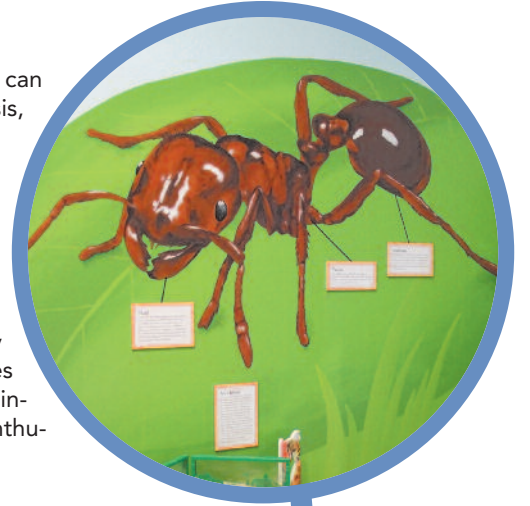
Welcome to WS4FSM, the museum's exciting new Ham Radio Station, where you can broadcast to others in Argentina, Amsterdam, St. Kitts, or one of two million amateur radio operators around the world! Ham radio is a hobby and a service in which participants, called "hams", use various types of radio communications equipment to communicate for public services and recreation. The West Palm Beach Amateur Radio Club will assist visitors in writing their name in Morse code and in making contacts with other "hams" worldwide.





BUGZ! EXHIBIT

Our new bug-themed exhibit lets you step into the shoes of an insect. Students can learn about the basic parts of an insect, study the steps in the cycle of metamorphosis, learn about some insect habitats, and even observe live ants and caterpillars.



STATES OF MATTER

Explore the basic principles of science with hands-on displays representing the states of matter, including solid, liquid, gas and, plasma displays. Continue through the gallery for more basic principles of electricity revealed through conversion machines and Jacob's Ladder. Perfect for all beginning science students and science enthusiasts of all ages!



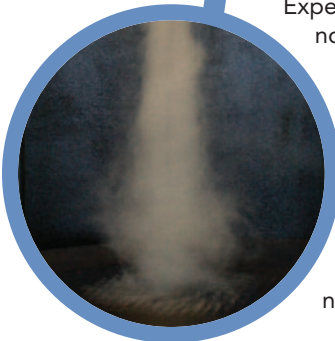
OBSERVATORY

Come enjoy the most spectacular views of the night skies in Palm Beach County's only public observatory. After suffering damage from a hurricane in 2005, the Museum has renovated this area which features a 14 inch F-11 Schmidt-Cassegrain optical Celestron telescope. Have you ever seen the rings of Saturn or the Great Red spot on Jupiter up close? Come and see what you are missing out! The observatory is open the last Friday of every month, weather permitting.



TWISTER EXHIBIT

Experience a tornado, the most intense of all atmospheric phenomena. This hands-on exhibit allows you to discover how a tornado is formed and learn about its immense size.



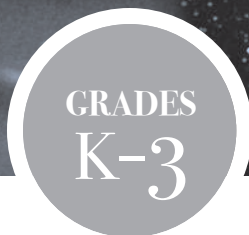
SCIENCE TRAIL

Our newly renovated interactive nature trail includes hands-on exhibits: Bubbleology, fossil dig, whisper dishes, Gator Golf, more classic physics demos, and a newly created butterfly garden.



Book a Night at the Museum

Spend 4 hours of quality time at our Museum, exploring these great exhibits during a private booking! Groups of at least 25 can schedule a booking on a Friday night from 6pm-10pm. Programming also available. See back page for details.



Discovery Labs & Live Demonstrations

Our educational program offerings include labs and demonstrations for K-12 groups. A lab is limited to a group of 30 or less and is generally best suited for a classroom setting. Demonstrations are performed for small or large groups, but please note that a small fee is charged for groups more than 75.

LABS

NEW INVESTIGATING INSECTS

Students become entomologists by observing insects in their nearby surroundings. They will explore the world of some of the oldest living creatures on earth. Hold live insects in the palm of your hands as we discuss habitats, characteristics and the beneficial role that insects play in our environment.

Big Idea 14, 17, SC.1.L.14.1, SC.1.L.14.3, SC.2.L.17.2, SC.3.L.15.1, SC.3.N.1.1



NEW PANTHERS PHYSICS LAB

This one-of-a-kind program, generously sponsored by the Florida Panthers hockey team, is a great introduction to the fascinating concepts of gravity, force, inertia, friction, and motion. Our expert educator will incorporate hands-on team challenges, multimedia, and real-life examples to show your students that Newton's Laws of Motion extend beyond the classroom and is even part of their favorite sports. At the end of each class, one lucky student will win a pair of tickets to a Florida Panthers hockey game! (Some exceptions may apply. Ask about this when booking the program)



Big Ideas: 3, 10, 12, 13, SC.K.E.5.1, SC.K.P.12.1, SC.K.P.13.1, SC.1.E.5.2, SC.1.P.12.1, SC.1.P.13.1, SC.2.N.1.6, SC.2.P.13.1, SC.2.P.13.3, SC.2.P.13.4, SC.3.E.5.4, SC.3.P.10.2



EVERGLADES: ALL ABOUT THE ALLIGATOR

This program introduces students to the most fascinating ecosystem in southern Florida. The program is demonstrated through the eyes of its top predator, the American alligator! Students will learn all about the food webs existing in the Everglades and have the opportunity to explore the anatomy of a real alligator. *Only available at the Museum.*

Big Idea 14, 17, SC.K.L.14.3, SC.K.N.1.2, SC.1.E.6.1, SC.1.E.6.2, SC.1.L.14.1, SC.1.L.16.1, SC.1.L.17.1, SC.2.L.17.1, SC.3.L.15.1

**only available at Museum*



CHEMICAL CONCOCTIONS

This program is designed to reinforce chemistry concepts, such as atoms, density, and chemical change. This hands-on program will allow students to use the scientific process and conduct experiments that will help students understand the difference between the states of matter on an atomic level. Upon exploring polymers, students will have the opportunity to make their own!

Big Idea 1, 8, 9, SC.K.P.9.1, SC.1.N.1.2, SC.2.P.8.2, SC.2.P.8.3, SC.2.P.9.1, SC.3.P.8.3



DEMOS

SEÑOR STUFFEE

This program gives participants the opportunity to learn about human anatomy, health and nutrition in a live demonstration! Students will be amazed and engaged when interacting with Señor Stuffee, a 7-foot tall stuffed doll with internal organs made from cloth. All participants receive a Señor Stuffee coloring book. Bilingual class may be available.

Big Idea 14, HE.K.C.1.5, HE.1.C.1.6, HE.2.C.1.6, SC.2.L.14.1, SC.2.L.17.1



NITROMANIA

If you're interested in the "coolest" science for your young learners, check out this liquid nitrogen program! The junior version of our most requested program includes many of the same demonstrations, but the discussion focuses on the states of matter.

Big Idea 8, 9, SC.1.N.1.2, SC.2.P.8.4, SC.2.P.8.3, SC.2.P.8.4, SC.3.P.8.1, SC.3.P.8.3, SC.3.P.9.1



TOUCH TANK

Your students will experience ocean organisms through observation, touch and fun narration. They will learn how animals are interdependent upon another and the environment while learning that all animals are alike in some ways and different in others. They will discover how these creatures have internal and external structures that keep them alive, help them grow, and reproduce.

Big Idea 14, 17, 18, SC.K.L.14.3, SC.1.L.14.1, SC.1.L.17.1, SC.2.L.17.1, SC.2.L.17.2, SC.3.L.15.1, SC.3.N.1.6



EXCITING ELECTRONS

This electrifying program includes many classic energy demonstrations sure to make students' eyes light up! From testing the strength of an electro-magnet to experiencing the static electricity from a Van der Graaf Generator, this program is full of hands-on participation which is the key to understanding magnetism and electricity.

Big Idea 10, SC.2.P.10.1, SC.2.P.13.2, SC.2.P.13.3, SC.3.P.10.1, SC.3.P.10.2, SC.3.P.11.2



Discovery Labs & Live Demonstrations

LABS

CHEMICAL CONCOCTIONS

This program is designed to reinforce chemistry concepts, such as atoms, density, and chemical change. This hands-on program will allow students to use the scientific process and conduct experiments that will help students understand the difference between the states of matter on an atomic level. Upon exploring polymers, students will have the opportunity to make their own!

Big Idea 1, 8, 9, SC.4.P.8.1, SC.5.P.8.1, SC.5.P.8.4, SC.5.P.9.1, SC.6.N.3.3, SC.7.P.11.1, SC.8.P.8.1



NEW INVESTIGATING INSECTS

Students become entomologists by observing insects in their nearby surroundings. They will explore the world of some of the oldest living creatures on earth. Hold live insects in the palm of your hands as we discuss habitats, characteristics and the beneficial role that insects play in our environment.

Big Idea 14, 17, SC.4.L.17.4, SC.5.L.14.2, SC.5.L.17.1, SC.6.L.15.1, SC.7.L.17.1, SC.7.L.17.2

FOSSIL FINDERS NOT AVAILABLE

In this unique program, students learn about fossils and Ice-Age Florida. Students dig for real Florida fossils outside in our specially designed excavation pit. Best of all, participants keep all of the fossils they find!

Big Idea 1, SC.4.E.6.4, SC.4.L.17.4, SC.5.L.15.1, SC.5.L.17.1, SC.6.E.6.1, SC.6.N.2.2, SC.7.L.15.1, SC.7.L.15.2, SC.7.L.15.3 **only available at Museum*

MINERALS 101

This lesson will lead students to understand the differences between rocks and minerals. Through investigation of an assortment of minerals, students will study different physical characteristics and properties of these natural

gems and compare their observations with the rest of the class.
Big Idea 1, 8, SC.4.E.6.1, SC.4.E.6.2, SC.4.P.8.1, SC.5.P.8.3, SC.8.P.8.4

NEW HEART IN MOTION LAB

Students will link anatomy, health and science through real-world applications. Emphasizing a healthy lifestyle, the program specifically focuses on the heart: its function, its importance, and the details behind how it works. The students will also use EKG (electrocardiogram) machines to monitor heart rate, compare active versus resting cardiograms and work with their own model heart.

Big Idea 14 SC.4.E.6.5, SC.4.N.1.2, SC.4.N.1.4, SC.4.N.1.5, SC.4.N.1.8, SC.4.N.3.1, HE.4.C.1.1, HE.4.C.1.6, HE.4.P.1.2, SC.5.L.14.1, SC.5.L.14.2, SC.5.N.1.1, SC.6.L.14.5, SC.7.L.16.1, SC.8.N.2.2

NEW BRAIN IN ACTION

Hold a brain in the palm of your hand as we take an inside look at the brain, its neurons, and the nervous system. Through hands-on exploration, students will see how this three pound organ, the brain, makes all five senses work, while also learning about what might affect the proper function of the brain. This class was designed in collaboration with scientists at The Max Planck Florida Institute.

Big Idea 14, SC.5.L.14.1, SC.6.L.14.1, SC.6.L.14.5, SC.6.N.3.4, SC.7.N.3.2

SHARK TOOTH LAB

Explore the fascinating world of sharks and their relatives. Working together, students will utilize scientific observation to sort and classify genuine fossil shark teeth. Students will also examine a real specimen and learn about the animal's amazing senses. While studying shark jaws, students will gain knowledge of various habitats and will create their own shark-tooth necklaces.

Big Idea 14, 15, 16, 17, SC.4.L.16.3, SC.5.L.14.2, SC.5.L.15.1, SC.5.L.17.1, SC.7.L.15.1, SC.7.L.15.3



CONTINUED ON NEXT PAGE...


 GRADES
4-8

Discovery Labs & Live Demonstrations (cont'd)

LABS

SECRETS OF EGYPT

Transform your students into Egyptologists! Join a Museum educator on a journey to the past and unlock the secrets of Egypt with this hands-on lab. Travel thousands of years back in time to discover what life along the Nile was really like in Ancient Egypt. Students will explore replica artifacts and utilize the scientific method to determine the culture, religion, and daily lifestyle of Ancient Egyptians.

Big Idea 1, 2, 14, SC.4.N.1.3, SC.5.L.14.1, SC.5.N.1.2, SC.5.N.1.5, SC.5.N.1.6, SC.6.N.1.5, SC.6.N.2.2, SC.6.N.2.3, SC.8.N.1.4, SC.8.N.1.6



cells. Students will also be amazed as they work like actual genetic scientists and isolate DNA from cells by using real world technology!

Big Idea 1, 4, 15, 16, SC.4.L.16.2, SC.4.L.16.3, SC.5.L.15.1, SC.6.L.14.2, SC.7.L.15.3, SC.7.L.16.1

DISSECTIONS

Students enjoy expanding their knowledge of body systems with hands-on dissections. Study anatomical structures and how these relate to function in a squid, frog, spiny dogfish shark, fetal pig, bird or owl pellets. Our expert educator will provide specimens, equipment and any worksheets.

Big Idea 14, 17, SC.6.L.15.1, SC.6.L.14.5, SC.6.L.14.1, SC.6.L.14.1, SC.7.L.16.1, SC.8.N.2.2



NEW PANTHERS PHYSICS LAB

This one-of-a-kind program, generously sponsored by the Florida Panthers hockey team, is a great introduction to the fascinating concepts of gravity, force, inertia, friction, and motion. Our expert educator will incorporate hands-on team challenges, multimedia, and real-life examples to show your students that Newton's Laws of Motion extend beyond the classroom and is even part of their favorite sports. At the end of each class, one lucky student will win a pair of tickets to a Florida Panthers hockey game! (Some exceptions may apply. Ask about this when booking the program)

Big Ideas: 3, 10, 12, 13, SC.4.P.10.2, SC.4.P.12.1, SC.4.P.12.2, SC.5.P.10.2, SC.5.P.13.1, SC.5.P.13.2, SC.5.P.13.3, SC.5.P.13.4, SC.6.N.3.2, SC.6.N.3.3, SC.6.P.11.1, SC.6.P.13.1, SC.6.P.13.2, SC.6.P.13.3, SC.8.P.8.2



CRIME SCENE SLEUTH LAB

Your students will become crime scene investigators in this hands-on forensics lab as they go through the steps of the scientific method to hypothesize who committed the crime, analyze the evidence and draw a conclusion of "who done it?" Students will have the opportunity to examine hair and clothing samples under microscopes, as well as test synthetic blood samples and compare them to the synthetic blood found at the scene of the crime. Students will also learn about the uniqueness of a fingerprint by taking and identifying their very own fingerprints.

Big Idea 1, 2, SC.5.N.1.5, SC.5.N.1.6, SC.5.N.2.1, SC.6.N.1.2, SC.6.N.2.2, SC.6.N.2.3, SC.7.N.1.3, SC.8.N.1.5, SC.8.N.1.6



CLEANING THE EVERGLADES (GRADES 6-8)

This hands-on lab investigates the pollutants in South Florida waters and offers an inquiry-based approach to determining potential cleaning methods.

Big Idea 1, 4, 7 SC.6.E.7.7, SC.7.E.6.6



NEW OWL PELLET DISSECTION

Look through the eyes of a raptor as we sort through masses of bone, teeth, hair, feathers and exoskeletons of various animals found in an owl pellet. Owls eat their prey whole and by dissecting these regurgitated treasures, we can discover clues about the habitats of these special birds of prey. This lab will allow students to become accustomed to techniques and equipment used in dissections.

Big Idea 1, 14, 17, 18, SC.4.N.1.1, SC.4.N.1.2, SC.4.L.17.2, SC.5.L.14.2, SC.6.N.1.4, SC.7.L.17.1, SC.8.L.18.4



NEW CIRCUIT SCIENCE

Take an electrifying look at how electricity gets around. This hands-on lab allows students to create their very own functioning electrical circuits and introduces some fundamental concepts like open vs. closed circuits, the difference between conductors and insulators, and much more. Students will use their new-found knowledge to construct a simple motorized robot of their very own!

Big Idea 10, SC.4.P.10.1, SC.4.P.10.2, SC.5.P.8.4, SC.5.P.10.1, SC.5.P.10.2, SC.5.P.10.4, SC.5.P.11.1, SC.5.P.11.2, SC.7.P.11.3, SC.7.P.11.2



NEW DNA IN MOTION

This hands-on science lab allows students to explore cells and DNA in an easy-to-understand, engaging manner. Students will use cell models to explore the different parts of an animal cell, as well as look at their very own



Discovery Labs & Live Demonstrations

GRADES
4-8

DEMOS

JURASSIC THEATER

Have dino-sized fun in this live presentation about fossils and dinosaurs! Learn about how fossils are formed and what they teach scientists about life in Earth's distant past. Students will examine and handle authentic fossils including petrified wood, a dinosaur egg, and even a woolly mammoth tooth while participating in this exciting show.

Big Idea 1, SC.4.E.6.4, SC.4.L.17.4, SC.5.L.15.1, SC.5.L.17.1

EXCITING ELECTRONS

This electrifying program includes many classic energy demonstrations sure to make students' eyes light up! From testing the strength of an electromagnet to experiencing the static electricity from a Van der Graaf Generator, this program is full of hands-on participation which is the key to understanding magnetism and electricity.

Big Idea 10, SC.4.P.8.4, SC.4.P.10.1, SC.4.P.10.2, SC.5.P.8.4, SC.5.P.10.1, SC.5.P.10.3, SC.5.P.10.4, SC.5.P.11.1



NITROMANIA

If you're interested in the "coolest" science for your young learners, check out this liquid nitrogen program! This program shows students the physical properties of two of the most important chemicals on Earth: water and nitrogen. Students will see changes in matter occur before their very eyes and understand the atomic and molecular behavior behind the phenomena.

Big Idea 9, SC.4.P.8.1, SC.4.P.8.2, SC.5.P.8.1, SC.5.P.8.4, SC.5.P.9.1

SHARK AND STINGRAY PETTINGS



NEW From 1pm-2pm on Tuesdays, Thursdays, and Saturdays don't miss our live aquarium feedings.

Watch our Aquarium Curator as she feeds the animals and ask her anything you like. On Saturdays stick around as you will get to touch and pet our real Nurse shark! Don't miss out on the action.

GRADES
9-12

Discovery Labs & Live Demonstrations

LABS

DISSECTIONS

Students enjoy expanding their knowledge of body systems with hands-on dissections. Study anatomical structures and how these relate to function in a squid, frog, spiny dogfish shark, bird or owl pellet. Our expert educator will provide specimens, equipment and any worksheets. *Big Idea 14, SC.912.L.14.50, SC.912.L.15.6*



PIG DISSECTIONS

In order to gain better understanding of mammal anatomy, including humans, students study a pig through dissection. In this advanced dissection lab, our expert educator will provide specimens, equipment and any worksheets. This lab is available as a two hour lab (over two days, if necessary) for a small upcharge. *Big Idea 14, SC.912.L.14.50, SC.912.L.15.6*



NEW OWL PELLET DISSECTION

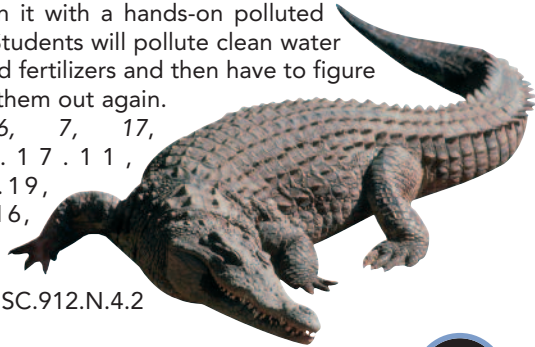
Look through the eyes of a raptor as we sort through masses of bone, teeth, hair, feathers and exoskeletons of various animals found in an owl pellet. Owls eat their prey whole and by dissecting these regurgitated treasures, we can discover clues about the habitats of these special birds of prey. This lab will allow students to become accustomed to techniques and equipment used in dissections. *Big Idea 1, 14, 17, 18, SC.912.L.14.14, SC.912.L.17.9*



CLEANING THE EVERGLADES

What exactly is in our waters and how can we clean it? This lab investigates the polluted waters of South Florida and offers an inquiry-based approach on how to clean it with a hands-on polluted water activity. Students will pollute clean water with dirt, oils and fertilizers and then have to figure out how to get them out again.

Big Idea 6, 7, 17, SC.912.L.17.11, SC.912.L.17.19, SC.912.L.17.16, SC.912.L.17.17, SC.912.L.17.18, SC.912.L.17.20, SC.912.N.4.2



NEW BRAIN IN ACTION

Hold a brain in the palm of your hand as we take an inside look at the brain, its neurons, and the nervous system. Through hands-on exploration, students will see how this three pound organ, the brain, makes all five senses work, while also learning about what might affect the proper function of the brain. This class was designed in collaboration with scientists at the Max Planck Florida Institute.

Big Idea 14, SC.912.L.14.24, SC.912.L.14.26, SC.912.L.14.27, SC.912.L.14.50



Certain dissections available to grades 2 and up.

Are you a member of the scouts or another youth group?

Have your meetings at the Science Museum.

SCOUTS

Come to the South Florida Science Museum to complete requirements necessary for science related merit badges!

- Receive a private planetarium show to earn your astronomy badges;
- See and touch our fossil, gem, and mineral collections (and even get some to take home) to earn your geology badge;
- Participate in one of many interactive programs as part of a science badge;
- Or follow our website for our Girl Scout Winter Wonders and Scout Science Events

Programs are available evenings and Saturday mornings and generally last an hour and a half.

BROWNIES BADGES

- Brownie Quest Journey: Home Scientist Badge

JUNIOR GIRL SCOUTS

- Junior Girl Scouts Get Moving: Detective Badge

WEBELO ACTIVITY BADGES

- Science Activity Badge, Geologist Activity Badge

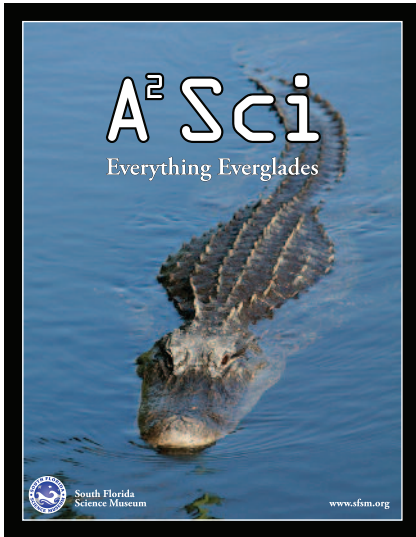
CUB SCOUTS

- Astronomy Belt Loop and Pin, General Science Belt Loop and Pin

EACH SCOUT COMPLETING THE PROGRAM WILL RECEIVE AN AUTHENTIC SCOUT SCIENCE BADGE FROM THE SOUTH FLORIDA SCIENCE MUSEUM



Online Classroom Resources



ANYTIME, ANYWHERE SCIENCE (A²SCI)

A²Sci is Anytime, Anywhere Science, an exciting online resource designed by the South Florida Science Museum in collaboration with the School District of Palm Beach County, The Education Network, and Plausible Productions. It allows students and teachers to access highly interactive lessons and science experiments through multiple media sources. The project seeks to increase the access to and level of science education within the K-12 population.

This A²Sci program is targeted to fourth and fifth grade students.

NEW EVERYTHING EVERGLADES will provide students with an understanding of the interdependence of plants and animals and their environment. This curriculum will help students comprehend energy flow and also human impact in biological systems.

ROTATION AND REVOLUTION: PLANET EARTH IN MOTION will provide students with an understanding of the motion of Earth and how it relates to time. This curriculum will help students comprehend the causes of the day/night cycle and seasons.

EARTH AND MOON: PARTNERS IN SPACE will provide students with an understanding of the moon, phases of the moon, and gravity. This curriculum will help students comprehend the motion of the moon with respect to Earth and how this motion affects phases of the moon.

TO THE MOON is an exciting and inspiring electronic field trip that examines space travel, engineering and experimentation through the view of the NASA moon missions.

THE SCIENCE OF FIZZ: CARBON DIOXIDE will provide students with an understanding of the scientific method and physical change. This curriculum will help students comprehend solutions, mixtures and states of matter.

WEATHERING AND EROSION: BREAK IT DOWN AND MOVE IT AROUND will provide students with an understanding of physical and chemical weathering and erosion. This curriculum will help students comprehend the causes of weathering and the movement and deposition of materials.

These lessons are available to all teachers in Palm Beach County via the South Florida Science Museum's website www.s fsm.org and the School District's on-line resource library, Learning Village.

For more information and updates about this program and others, please visit www.s fsm.org.

The program provides teachers with a full curriculum that allows them to introduce a specific topic of science:

1. Students are first introduced to the science topic through video. Each video segment is three to five minutes long ending with a question to lead into classroom activities.
2. Teachers reinforce the topic through classroom activities and experiments, work sheets, and other curricula. Classroom activities are designed using common classroom or household items to ensure accessibility. They also reach a variety of learning styles.
3. Additional activities and worksheets are available on *Learning Village* in Palm Beach County.
4. Take-home Student Activity Workbooks provide the opportunity for the students to strengthen retention by interacting with parents and friends.
5. A comprehensive Teacher Guide gives background information and step-by-step activity directions to make teaching science straightforward.

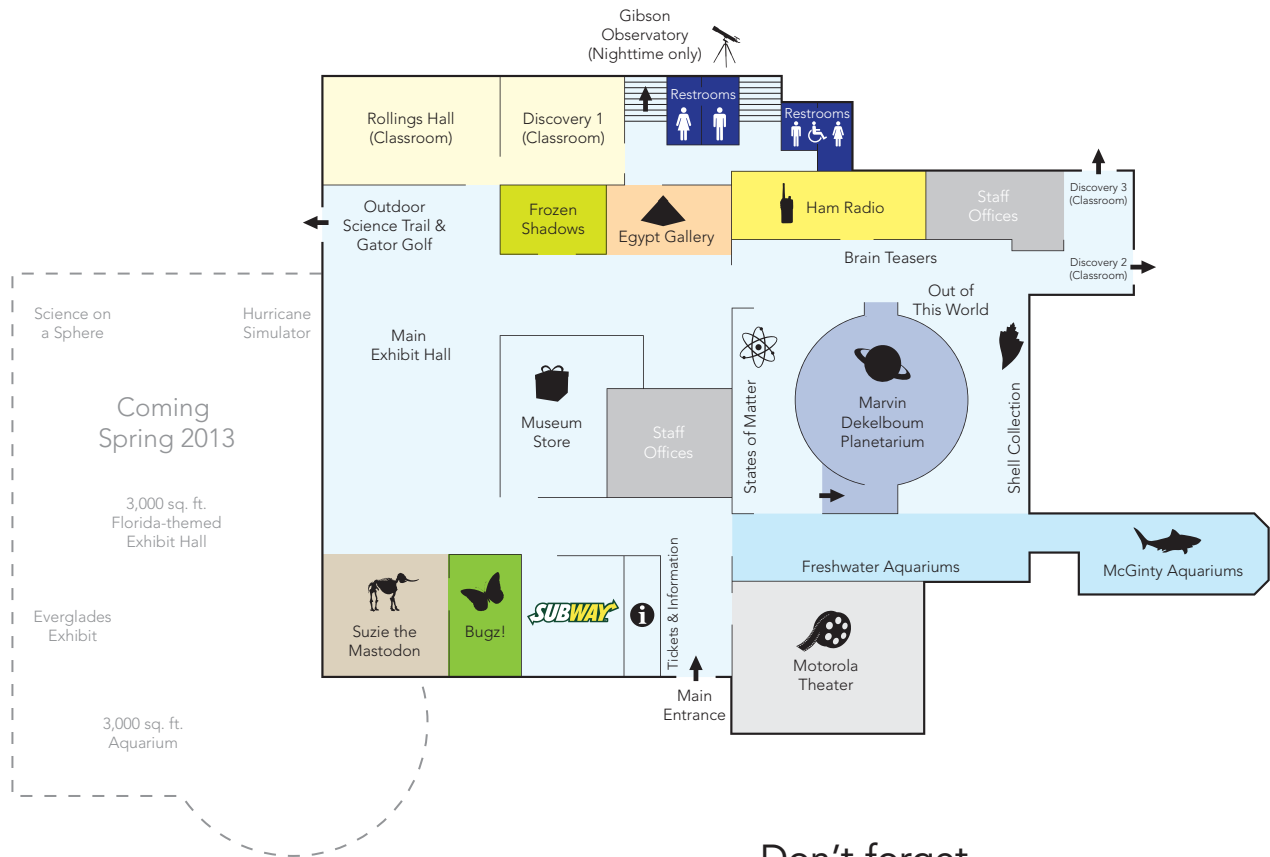
HOMESCHOOL GROUP

We offer several different classes for grades K-5. Check out the schedule of classes that run all year long. Click on www.s fsm.org and look under the education tab to see more details or call (561) 832-2026.



Floor Plan

INSIDE THE MUSEUM



Don't forget...
Science continues outside

SCIENCE TRAIL ATTRACTIONS:

- 👁 Baby Sea Turtle Game
- 👁 Dinosaur Tracks
- 👁 Echo Tube
- 👁 Fossil Dig
- 👁 Gator Golf
- 👁 Kaleidoscopes
- 👁 Steam Engine
- 👁 Bubbleology
- 👁 Whisper Dishes



Gator Golf



Steam Engine



Now Located At
The South Florida Science Museum



CATERERS



Fresh and Healthy Food for all of Your Needs!

✓ EXPERIENCE THE
SIMPLICITY OF
SUBWAY CATERING
WITH JUST ONE
PHONE CALL



✓ ARRANGE YOUR NEXT
BIRTHDAY PARTY,
FIELD TRIP, OR
GROUP CATERING
OPPORTUNITY

✓ BOXED LUNCHES INCLUDE:

- SANDWICH
- APPLE SLICES
- COOKIE
- MILK OR JUICE

✓ FLEXIBLE OPTIONS
TO FIT ANY
PARTICULAR PARTY
SIZE OR BUDGET

(Boxed Meals, Platters, Catering Trays)



South Florida Science Museum 4801 Dreher Trail North West Palm Beach, FL 33410

sfmsubway@gmail.com 561-370-7741



In Preparation For Your Visit

We want to make your Museum experience great! Below is some helpful information for the day of your visit.

✓ BEFORE CALLING THE MUSEUM TO BOOK A VISIT

- verify your dates with your school administration
- confirm transportation availability
- determine how many students and chaperones will be visiting (see chaperone notes)
- choose a Museum exploration or add an educational program

Once you have all of this, call us! **561-832-2026!** Please call between 9am and 4pm, Monday through Friday. If you need to leave a message, be sure to include the time and date of your request, your organization name, the number of students, and the best way to reach you.

After you schedule your visit with us, you will receive a confirmation fax or email. Please sign and return the form.

ON THE DAY OF YOUR VISIT

- ✓ Please arrive 15 minutes before your scheduled time, to ensure a great experience.
- ✓ Buses can drop students off at the front door and then park in designated spots, west of traffic loop. Vehicles may not remain parked in the traffic loop. Drivers can enter exhibit area at no charge.
- ✓ When you arrive, please know the total number of students and chaperones in your group. The group leader will need to check in at the front desk upon arrival.
- ✓ Your group will be greeted by Museum staff and directed to your first activity.

LUNCHES

Visitors have the option to bring their own lunches. There are picnic tables available for groups for your lunch or snacks. If possible, we recommend leaving coolers, etc. on the bus until lunch time.

CHAPERONE NOTES

One chaperone is required per 5 students at \$6.00 per chaperone. Chaperones must be accounted for when final headcount is submitted.

**Groups will still be subject to the \$6.00 per 5 student chaperone charge even if the minimum requirement is not met.*

ON THE DAY OF THE CLASS

- ✓ Students must be supervised by their teacher at all times.
- ✓ Due to materials limitations, presentations and students cannot be added the day of the program.
- ✓ Our science educator will need a table at the front of the room. Laboratories require students to be seated at tables and access to a sink.

OUTREACH NOTES

Have the Museum come to you! Our science educator will bring a kit of materials and equipment to teach many of our programs at your school.

PAYMENT POLICY AND FEES

- A 20% non-refundable deposit is due within 14 days of confirming your reservation.
- Final payment and headcount are due 14 days prior to your scheduled visit.
- No refunds or credits will be made for no-shows the day of visit.

- If final payment has not been received by the indicated day, reservations are subject to cancellation and your group may not be admitted. **NO REFUNDS WILL BE GRANTED.** Cancellations made seven (7) or more days prior to scheduled visits will be refunded less the 20% deposit. Rescheduling cannot be guaranteed due to limited availability.
- On the day of your scheduled visit, check in for your group at the Front Desk under your group/contact name. Additional tickets may be purchased at the group rate, on the day of your scheduled visit, providing space is available.
- Acceptable forms of payment are check, money order, or credit card (Visa, MasterCard or Discover).
- Please make checks or money orders payable to South Florida Science Museum and mail to:

South Florida Science Museum, 4801 Dreher Trail North, West Palm Beach, FL 33405, Attention: Group Sales
- Surcharges may apply for special event days and holidays.
- Museum Memberships, coupons and other discounts are not applicable with school group rates.
- Teacher Members receive \$25 off the total cost of their first program.
- Instructors reserve the right to stop program at any time if student behavior is inappropriate.

PRICING FOR GROUPS SCHEDULED IN ADVANCE:

Museum visit

Self-guided visit admission per student	\$ 6.00
Visit plus an educational program per student	\$ 7.50
Visit plus a laboratory program per student	\$ 9.00 or \$12.00
Chaperone	\$ 6.00

Outreach Programs

Outreach mileage fees\$1.00/mile

Demonstrations:

One presentation	\$250
Additional presentation	\$125/each
Each presentation with a group larger than 75 students	\$50

Laboratories:

Laboratory programs (including basic dissections) per student	\$9.00
Shark or Pig Dissection Class per student	\$12.00

Additional fees may apply for multiple room set-up.

Program Request Form



PLEASE FILL OUT THIS FORM COMPLETELY AND MAIL, FAX OR EMAIL TO:
 South Florida Science Museum, Attn: Group Sales Office, 4801 Dreher Trail North, West Palm Beach, FL 33405;
 FAX 561-832-4461; or programs@sfsm.org.

TO SIGN UP OVER THE PHONE PLEASE CALL OUR GROUPS SALES MANAGER AT (561) 832-2026 or email us
 at programs@sfsm.org. All calls will be returned within one business day.

PLEASE NOTE that your reservation date is not secured until our group sales office has contacted you
 with your confirmation number.

Teacher's Name: _____ Phone: _____

Preferred Email: _____

School Name: _____ Fax # _____

School Address _____

City/ZIP _____ School Phone _____

Program _____ Grade Level _____

Is this program to be performed at the Museum or at your school? at museum or school

1st Choice Date:		
	Program Time	Number of students
1		
2		
3		
4		
5		
6		

2nd Choice Date:		
	Program Time	Number of students
1		
2		
3		
4		
5		
6		

PAYMENT METHOD: Check (CK # _____) VISA MASTERCARD DISCOVER

Credit Card #: _____ Exp. Date: _____

Signature: _____

Teacher members can receive \$25 off their first program and 20% off each additional program booked for twelve months.
 A 20% non-refundable payment is due within 14 days of confirming your reservation (booking date). Headcount and full
 payment are due 14 days prior to your scheduled visit.

ONLY CREDIT WILL BE GRANTED FOR OVERAGES. You must cancel at least 24 hours before your scheduled program by
 phone or email to avoid a \$50 cancellation fee.

JOIN AS TEACHER MEMBER

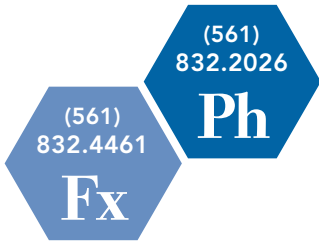
Teacher Member number _____

FOR OFFICE USE ONLY: Confirmation no.:	Total Cost:
--	-------------



South Florida Science Museum
4801 Dreher Trail North
West Palm Beach, FL 33405

Non-profit Org.
U.S. Postage
PAID
West Palm Beach, FL
Permit No. 123



WATCH for updates on these fun upcoming events!

TREASURE! • September 28, 2012 through January 6, 2013

Your hunt for discovery has only just begun... This special exhibit is a 5,000 ft. interactive adventure for all ages, featuring many thematic areas and hands-on activities, which include actual artifacts from shipwrecks and other sites loaded with treasure. Explore the science, technology, history and personalities of hunters as you join the expedition to uncover treasure in this thrilling exhibit.

STROLLER DAZE • September 5, 2012

Parents with their small children will get to participate in fun filled crafts & activities, storytelling, and games from 9am – 12pm. Child friendly vendors and community groups will be at the Museum for presentations, demonstrations, and raffle giveaways. Book your school group for this day and receive 25% OFF the program.

HALLOWEEN NIGHTS AT THE MUSEUM • October 26, 2012

Join us for a Spook-tacular Night at the Museum. Dress your best for our costume contest, have fun exploring the exhibits, see exciting demos, and trick or treat your way around as you collect scienceterrific goodies!

FAMILY FUN FEST • November 23, 2012

Start off the festive holiday season with cool science labs, fun activities, crafts, giveaways and more! The Museum is teaming up with PNC Bank from 10am-6pm to bring interactive fun through a mobile learning adventure.

DARK SKY PARTY NIGHTS AT THE MUSEUM • November 30, 2012

Become acquainted with the stars and explore the universe on this stellar evening! Enjoy crafts & activities, presentations, & more. The ASPB will be on site with their telescopes for a great view of the night sky.

DROP IT, BUILD IT ENGINEERING COMPETITION • March 9, 2013

The Museum in partnership with the Florida Engineering Society provides a premiere out-of-school science competition to elementary, middle & high school students offering substantial cash prizes for the top four finishers in each of the five engineering categories while enjoying a fun-filled family day of science exploration!

SEASONAL SCIENCE ADVENTURE WORKSHOPS

Winter: December 31, 2012 through January 4, 2013 – Winter Wonders

Spring: March 25, 2013 through March 29, 2013 – Spring Science

Summer: Starting June 10, 2013 - Science Summer Camp

Young scientists ages 4-12 will enjoy interacting with cool exhibits, take part in lab demos, experiments, crafts & more during these workshops.

SILVER SCIENCE DAYS • Every Second Wednesday of Every Month

Learning at the Museum is not just for kids! On these special Wednesdays, guests 62 & older experience the Museum, a complimentary planetarium show, educational presentation & refreshments.

Reserve your custom-made Science Night

A team of educators from the Museum will bring two to four programs to your school or organization for an entire evening of education and fun. This is a great way to get parents and the community involved in our students' academics! This event is highly customizable to your location, audience and budget, and includes lots of participant take-homes! This works well as a school fundraiser with community sponsorship!

Most programs are available including our **Engineering is Elementary** curriculum.

Please book this event 3-4 weeks in advance to ensure optimum availability of programming. Half payment is due three weeks prior to event. Nonrefundable.

CALL TODAY FOR MORE INFORMATION!

Nights at the Museum

Our Nights at the Museum events take place on the last Friday of every month from 6pm-10pm.

These nights are themed differently each month and feature exciting activities for the whole family, including star gazing through our 14-inch observatory telescope, planetarium shows, special guest speakers, and science lab demonstrations. Enjoy the world of science in a totally different light... by visiting the South Florida Science Museum at night!

